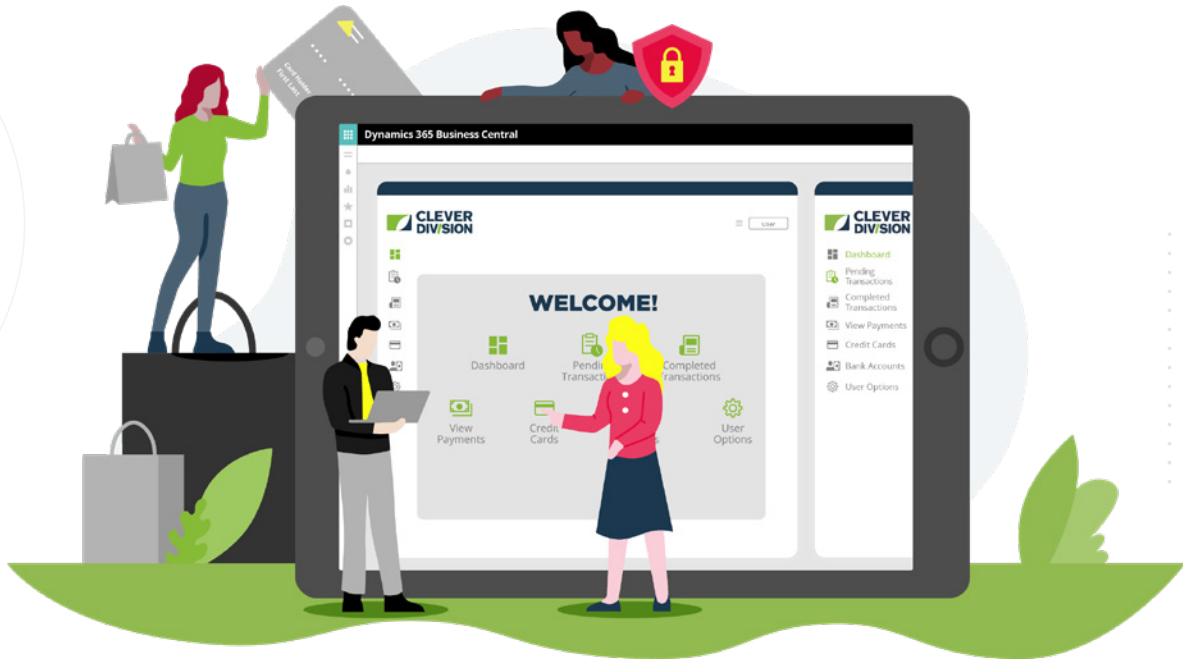




CLEVER DIVISION™  
FOR MICROSOFT DYNAMICS™ 365 BUSINESS CENTRAL

# POWER UP YOUR CLIENTS' MID-SIZED BUSINESSES WITH AN ENTERPRISE-LEVEL PAYMENT PORTAL.

Your clients can securely and effortlessly accept payments—from anyone, anywhere, all within Dynamics 365 Business Central.



## CLEVER DIVISION CUSTOMER PORTAL SEAMLESSLY INTEGRATES WITH MICROSOFT DYNAMICS BC AND CE TO ACCEPT PAYMENTS ANYTIME.

Empower your clients to accept all kinds of payments—including credit cards, PayPal and ACH within Microsoft Dynamics BC. Our brandable software features a user-friendly dashboard available 24/7, enabling their customers to manage invoices, transactions, and payment methods efficiently, ensuring streamlined customer support and billing management.

PARTNER WITH RED MAPLE TO GIVE YOUR CLIENTS A ONE-STOP BC PAYMENT SOLUTION WITH GAME-CHANGING FEATURES. [SCHEDULE A DEMO.](#)



[info@redmaple.com](mailto:info@redmaple.com)



[redmaple.com/clever-division-bc](https://redmaple.com/clever-division-bc)



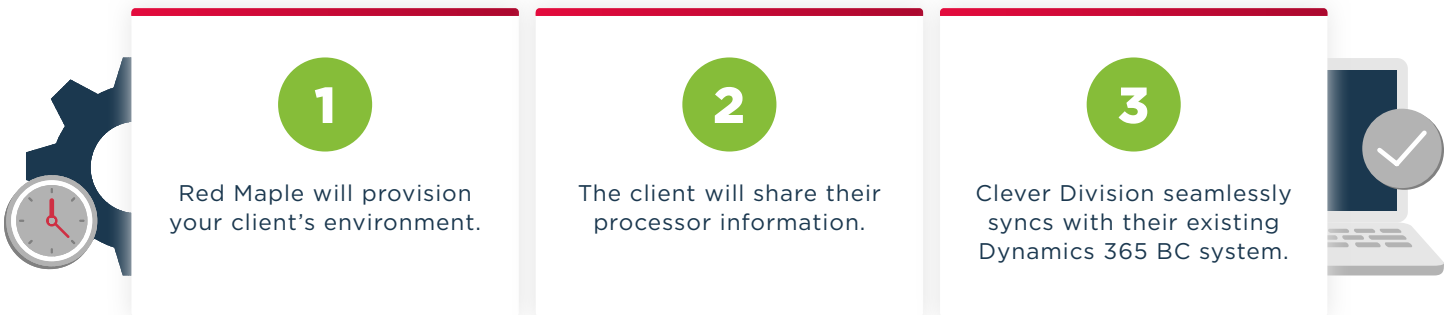
+1 830.280.0400

# WHY YOUR CLIENTS WILL LOVE CLEVER DIVISION CUSTOMER PORTAL.



- Clever Division for BC has **multiple supported processors**, so clients have the freedom to keep their existing processor and financial institution, leading to less hassle and more savings.
- Clients save time and money on customer support with an **online, easy-to-use portal accessible 24/7** with a single, secure place to review, pay and track multi-location invoices.
- Give your clients the ability to **surcharge eligible payments** to offset transaction fees and save money.
- Clients will love the **'Click to Pay' feature** that enables their customers to use a single link to review invoices and securely send payments.
- Clients can **accept multiple payment methods** and empower their customers to pay any way they'd like, including credit cards, ACH and PayPal, reducing transaction costs.
- Empower your clients to **accept multiple currencies** to transact business anywhere.

## HOW YOUR CLIENTS CAN BE UP AND RUNNING WITHIN DAYS.



## ABOUT RED MAPLE.



Red Maple has specialized in expanding the capabilities of Microsoft Dynamics 365 since 2003. Globally deployed by 500+ companies, Red Maple's solutions offer extensions and additions for Finance & Operations (F&O), Business Central (BC) and Customer Engagement (CE) users. Additions such as card present, card not present, ACH, wallet payments, Level II/III processing, surcharging, PCI 4.0 ready, and omnitoken capabilities are a few of the robust features.

PARTNER WITH RED MAPLE TO GIVE YOUR CLIENTS A ONE-STOP BC PAYMENT SOLUTION WITH GAME-CHANGING FEATURES. [SCHEDULE A DEMO.](#)

✉ [info@redmaple.com](mailto:info@redmaple.com) 🌐 [redmaple.com/clever-division-bc](http://redmaple.com/clever-division-bc) ☎ +1 830.280.0400